

Apeos C3060
Apeos C2560
Apeos C2060

Reference Guides are available on the official website.
Please go to the official website, then select your country and/or region to proceed.
Search the model name of your machine using the search bar.



<https://support-fb.fujifilm.com/setupWorldwide.do>

User's Manual

Before using the machine, please read this manual thoroughly. Be sure to keep this manual for future reference.

Read Before Using

Before using the machine, please read "License Agreement" (terms for using the Adobe Inc. software) provided in the "Reference Guide Main Unit".

Reference Guide is available on the official site of our company.

Use the software only after you agree with all applicable terms and conditions. By using the software, you are agreeing to be bound by the terms and conditions. If you do not agree to "License Agreement", please contact the dealer you purchased the product.

The manuals for this product may include descriptions about the models, features, and separately-sold accessories that are unavailable depending on the country and/or region. Contact your local representative for more information.

- This manual may not be edited, modified or copied in whole or part without the written consent of the publisher.
- Some parts of this manual are subject to change without prior notice.
- The screen shots and the illustrations in this manual are used as examples. They may differ from yours depending on the model, the software, or the OS.



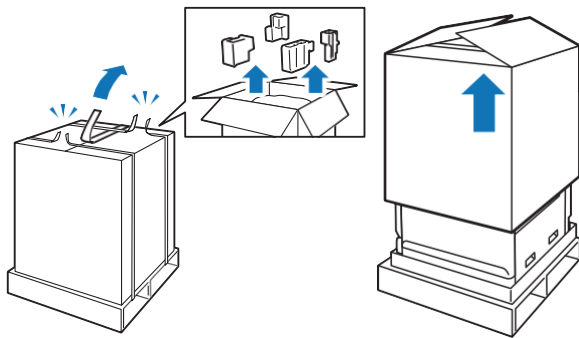
971E 65673

Note The default Administrator ID is "11111" and the default password is "Serial Number of this machine".

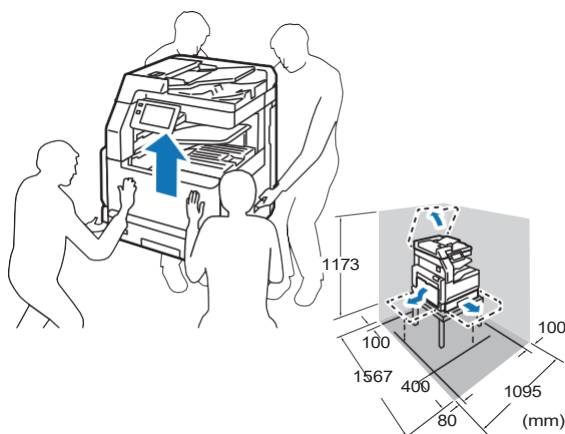
October 2024 FD1165E5-5 Edition 1

Setup of device

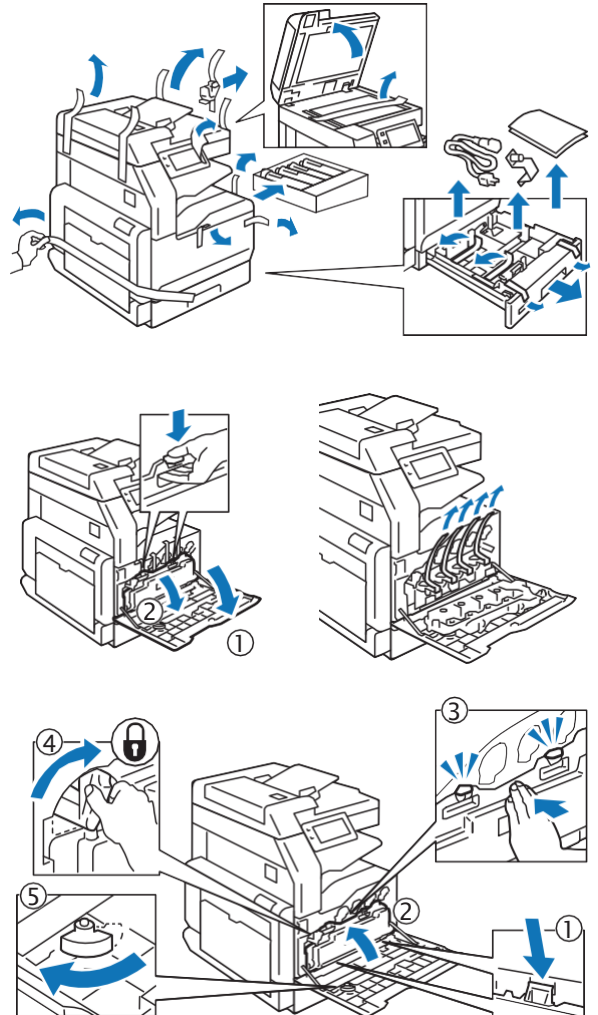
1. Pull out the packing box upward.



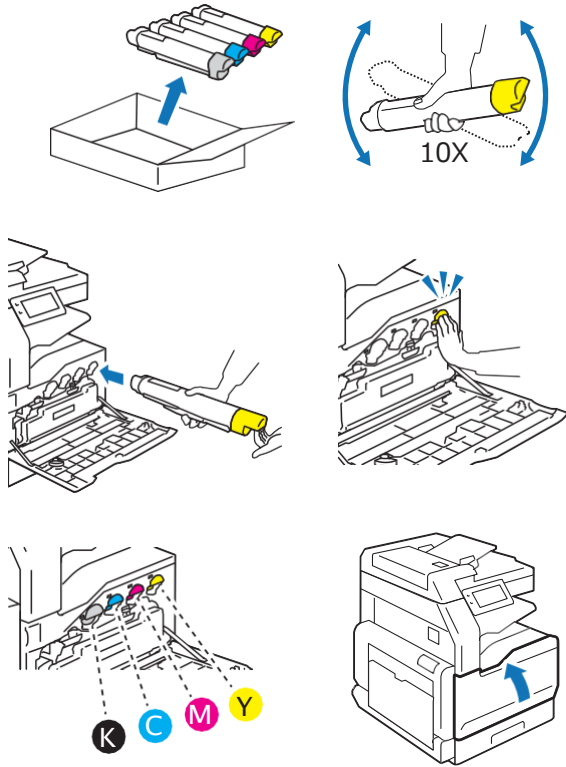
2. Install the device.



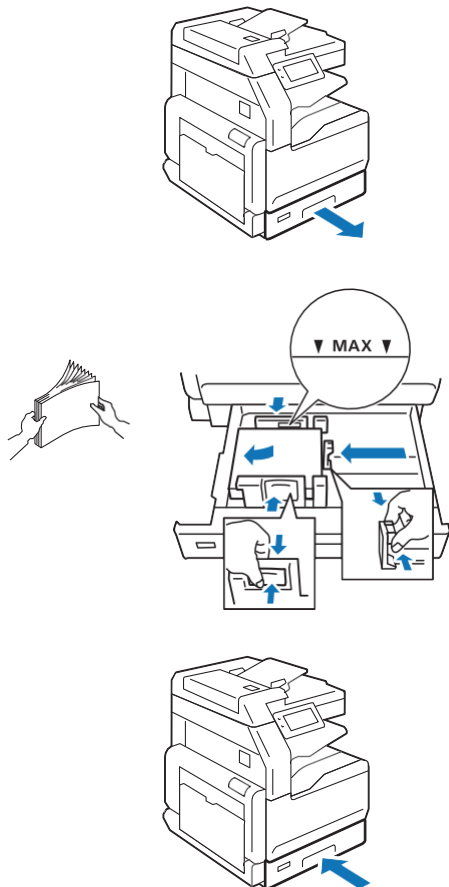
3. Remove the packing materials.



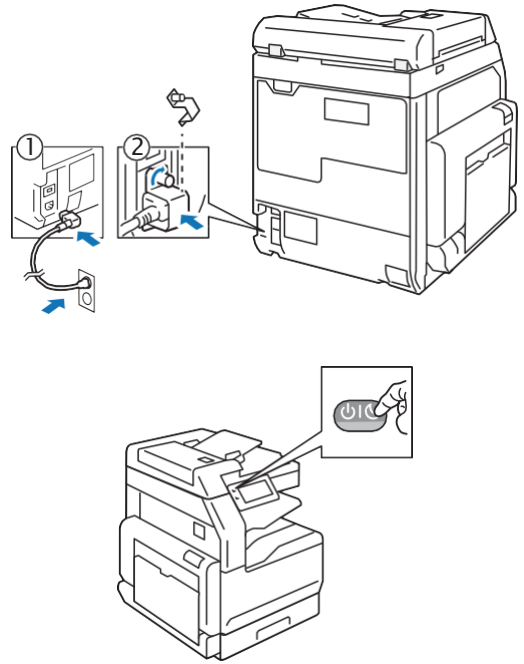
4. Set the toner cartridges.



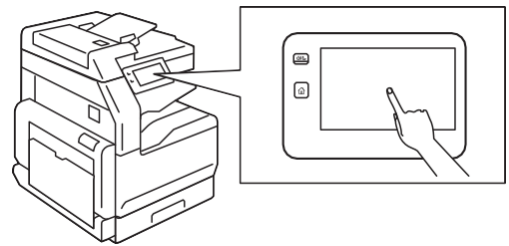
5. Load papers.



6. Connect power supply.



7. Set [Language] > [Country/Region] according to the instructions on the screen.



The device is restarted, and the settings are applied.

Note

If [Country/Region] is not correctly set, fax line connection, Wi-Fi connection, and other functions may violate the laws of the country or region. Make sure to set the correct country or region where the device is installed.

Safety Notes



























Before using this product, read "Safety Notes" carefully for safety use.

This product and recommended supplies have been tested and found to comply with strict safety requirements including safety agency approvals and compliance with environmental standards. Follow the following instructions for safety use.

⚠ WARNING

Any unauthorized alteration including an addition of new functions or connection to external devices may not be covered by the product warranty. Contact your local representative for more information.

Follow all warning instructions marked on this product. The warning marks stand for the followings:

 DANGER	Used for item that if not followed strictly, can lead death or severe or fatal injuries and the possibility to do it is comparatively high.
 WARNING	Used for items that if not followed strictly, can lead to severe or fatal injuries.
 CAUTION	Used for items that if not followed strictly, can cause injuries to user or damages to machine.
<p>: A symbol for items to pay attention to when handling machine. Follow instructions carefully to use machine safely.</p> <div style="display: flex; justify-content: space-around;"> <div style="text-align: center;"> Caution</div> <div style="text-align: center;"> Caution for electrostatic breakage</div> <div style="text-align: center;"> Flammable</div> <div style="text-align: center;"> Explosive</div> <div style="text-align: center;"> Electric shock</div> <div style="text-align: center;"> Heated surface</div> </div> <div style="display: flex; justify-content: space-around; margin-top: 10px;"> <div style="text-align: center;"> Moving object</div> <div style="text-align: center;"> Pinched fingers</div> <div style="text-align: center;"> Rotating Parts Hazard</div> </div> <div style="display: flex; justify-content: space-around; margin-top: 10px;"> <div style="text-align: center;"> Sharp Edge Hazard</div> </div>	
<p>: A symbol for prohibited items. Follow instructions carefully to avoid any dangerous acts.</p> <div style="display: flex; justify-content: space-around;"> <div style="text-align: center;"> Prohibited</div> <div style="text-align: center;"> No fire</div> <div style="text-align: center;"> Do not touch</div> <div style="text-align: center;"> Do not use in bathroom</div> </div> <div style="display: flex; justify-content: space-around; margin-top: 10px;"> <div style="text-align: center;"> Do not tear down</div> <div style="text-align: center;"> Keep away from wet</div> <div style="text-align: center;"> Never touch with wet hand</div> </div>	
<p>: A symbol for items that must be performed. Follow instructions carefully to carry out these essential tasks.</p> <div style="display: flex; justify-content: space-around;"> <div style="text-align: center;"> Instructions</div> <div style="text-align: center;"> Unplug</div> <div style="text-align: center;"> Ground/Earth</div> </div>	

■ Electrical Safety

⚠ WARNING

This product shall be operated by the power source as indicated on the product's data plate. Consult your local power company to check if your power source meets the requirements.



WARNING: Connect this product to a protective earth circuit.

This product is supplied with a plug that has a protective earth pin. The plug fits only into an earthed electrical outlet. This is a safety feature. If the plug doesn't fit to the outlet, contact an electrician to replace the outlet to avoid risk of electric shock. Never use an earthed adapter plug to connect the product to the electrical outlet that has no earth connection terminal. Improper connection of a grounding conductor may cause electric shock.



Plug the power cord directly into a grounded electrical outlet. To prevent overheat and a fire accident, do not use an extension cord, a multi-plug adaptor or a multiple connector. Consult your local representative to check if an outlet is grounded.



Connect this product to a branch circuit or an outlet that has larger capacity than the rated ampere and voltage of this product. See the data plate on the rear panel of this product for its rated ampere and voltage.



Never touch the power cord with wet hands. It may cause electric shock.



Do not put an object on the power cord.



Always keep the plug connection free of dust. The dusty and damp environment may bring about minute electric current in a connector. It may generate heat and eventually cause a fire accident.



To avoid the risk of electric shock and a fire accident, only use the power cord supplied with this product or the ones designated by our company. The power cord is exclusive use for this product. Do not use it for any other product. Do not damage or alter the power cord. Damage and alteration may generate heat and eventually cause electric shock or a fire accident. If the power cord is damaged or insulated wires are exposed, contact your local representative for its replacement. Do not use a damaged or uninsulated cord to avoid the risk of electric shock and a fire accident.

⚠ CAUTION



Unplug this product to turn off power completely. Install this product near an outlet to easily unplug it in case of emergency.



When cleaning this product, always switch off and unplug it. Access to a live product interior may cause electric shock.



Do not unplug or re-plug this product with the switch on. Plugging and unplugging a live connector may deform the plug and generate heat, and eventually cause a fire accident.



Hold the plug not the cord when unplugging this product, or it may damage the cord and cause electric shock or a fire accident.



Switch off and unplug the product when it (i.e., fax function) is not used over weekends or long holidays. Please note that it cannot receive fax message during switch-off.



Once a month, switch off this product and check if the power cord is plugged firmly into an electrical outlet;

- the plug is not excessively heated, rusted or bent;
- the plug and electrical outlet are free of dust; and
- the power cord is not cracked or worn down.

Once you notice any unusual condition, switch off and unplug this product first and contact your local representative.

Product Installation

WARNING

Do not locate this product where people might step on or trip over the power cord. Friction or excessive pressure may generate heat and eventually cause electric shock or a fire accident.

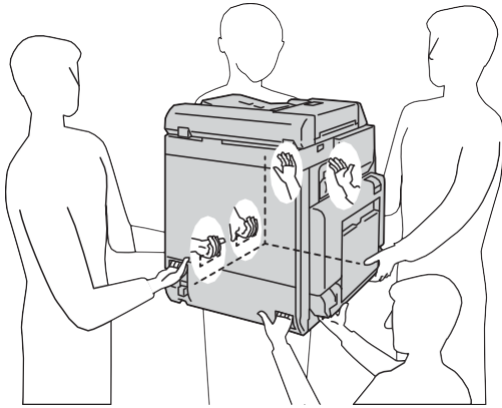
CAUTION

- Never locate this product in the following places:
 - Near radiators or any other heat sources
 - Near volatile flammable materials such as curtains
- In the hot, humid, dusty or poorly ventilated environment
- In the place receiving direct sunlight
- Near cookers or humidifiers

Keep away the packing materials of product from small children. The thin film may cling to nose and mouth and prevent breathing.

This product weighs 70 Kg. When moving it, always carry it by a team of four persons to avoid mishandling or injury.

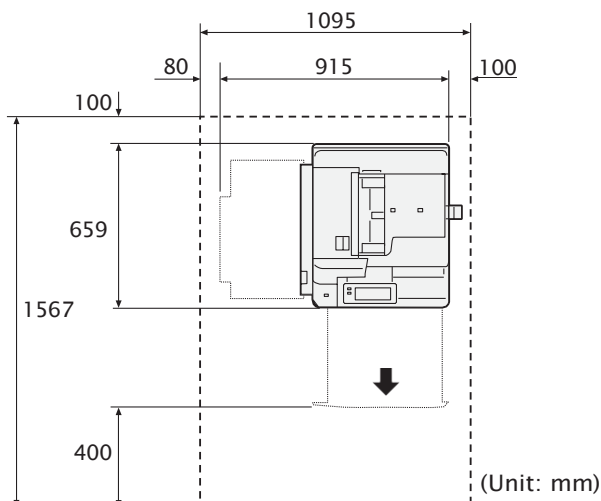
When lifting this product, place the hand on the front panel and firmly grip the handholds provided on the right side, the stepped portion on the left side, and the recessed portion on the underside of the product. Never lift it by gripping any other areas. It will prevent you from dropping the product and getting back ache or injuries.



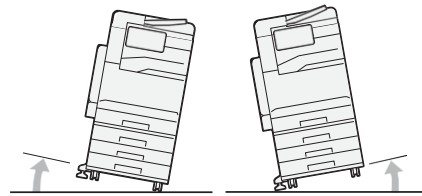
Locate this product on a level and sturdy surface that can withstand a weight of 68 kg (minimum configuration). Otherwise, if tilted, the product may fall over and cause injuries.

Locate this product in a well-ventilated area. Do not obstruct ventilation openings of the product. Keep the minimum clearance as shown in the next figure for ventilation and an access to the power plug. Unplug the product if an abnormal condition is noted.

Minimum configuration



Do not incline the product at more than 10° angle. Otherwise, it may fall over and cause injuries.



Always lock the wheels of this product after installation. Otherwise, it may fall over or slide and cause injuries.

To bundle wires and cables, always use the cable ties and spiral tubes that our company supplies. Otherwise, it may cause some defects.

Operational Safety

WARNING

The operator's product maintenance procedures are described in the manuals supplied with this product. Do not carry out any other maintenance procedures not described in the manuals.

This product features safety design not to allow operators access to hazard areas. The hazard areas are isolated from operators by covers or protectors which require a tool to remove. To prevent electric shock and injuries, never remove those covers and protectors.

To avoid the risk of electric shock and a fire accident, switch off and unplug the product promptly in the following conditions, then contact your local representative.

- The product emits smoke or its surface is unusually hot.
- The product emits unusual noise or odor.
- The power cord is cracked or worn down.
- A circuit breaker, fuse or any other safety device becomes activated.
- Any liquid is spilled into the product.
- The product is soaked in water.
- Any part of the product is damaged.

Do not insert any object into slots or openings of this product. Do not put any of the followings on the product:

- Liquid container such as flower vases or coffee cups
- Metal parts such as staples or clips
- Heavy objects

If liquid is spilled over or metal parts are slipped into the product, it may cause electric shock or a fire accident.

Do not use conductive paper such as origami paper, carbonic paper, conductively-coated paper or conductive ink preprinted paper. When paper jam occurs, it may cause short-circuit and eventually a fire accident.

When cleaning this product, use the designated cleaning materials exclusive to it. Other cleaning materials may result in poor performance of the product. Never use aerosol cleaners to avoid catching fire and explosion.

Do not pull out two or more paper trays at a time. If somebody accidentally pushes the product with multiple trays open, it may incline and fall over. This may cause injuries. When you need to open paper trays, do it one after the other.

If you need to pull out a tray to remove paper jam, contact your local representative. Do not pull out a tray, otherwise it may cause injuries.

⚠ CAUTION

! Always follow all warning instructions marked on or supplied with this product. To avoid the risk of burn injuries and electric shock, never touch the area with the "Heated surface" or "Electric shock" marks on.

⊘ Keep electrical and mechanical safety interlocks active. Keep the safety interlocks away from magnetic materials. Magnetic materials may accidentally activate the product and cause injuries or electric shock.

! Do not attempt to remove a paper deeply jammed inside the product, particularly a paper wrapped around the fusing unit or the heat roller. Otherwise, it may cause injuries or burns. Switch off the product immediately and contact your local representative for more information.

⊘ Never touch the paper output area of the finisher during operation. It may cause injuries.



Be careful in removing jammed staples.

! Waste staples may come out with output paper. Be careful not to get injured by the staples.

⊘ Never touch safety interlocks. When a front cover is open, safety interlocks become activated to stop the machinery. Do not apply pressure on safety interlocks with a coin or screwdriver. Otherwise, the machinery may become activated and cause injuries.

⊘ Do not staple punched holes of paper. Sharp points of a staple may cause injuries.

⊘ Do not apply excessive force to hold thick document on the document glass. It may break the glass and cause injuries.

! For continuous operation more than 1 hour, take a 10 – 15 minute break every hour to rest your eyes.

! To move this product to another location, contact your local representative.

! Fusing Unit Safety
When removing the Fusing Unit, always switch off first and wait for 40 minutes until it cools off.

⚠ Fusing Unit Safety
Do not dismantle the Fusing Unit. When removing paper jam from the Fusing Unit, contact your local representative. Otherwise, it may cause injuries.

! USA only
To reduce the risk of fire, use only No. 26 American Wire Gauge (AWG) or larger telecommunication line cord.

! Ventilate well during extended operation or mass copying or printing. It may affect the office air environment due to odor such as ozone in a poorly ventilated room. Provide proper ventilation to ensure the comfortable and safe environment.

■ Consumable

⚠ WARNING

! Store all consumables in accordance with the instructions given on its package or container.

! Never use a vacuum cleaner for spilled toner and residual toner in this product, toner cartridge or waste toner container. It may catch fire by electric sparks inside a vacuum cleaner and cause explosion. Use a broom or a wet cloth to wipe off the spills. If you spill a large volume of toner, contact your local representative.

⊘ Never throw a toner cartridge into an open flame. Remaining toner in the cartridge may catch fire and cause burn injuries or explosion. If you have a used toner cartridge no longer needed, contact your local representative for its disposal.

⊘ Never throw a waste toner container into an open flame. Toner may catch fire and cause burn injuries or explosion. If you have a used waste toner container no longer needed, contact your local representative for its disposal.

⚠ CAUTION

! Keep drum cartridges and toner cartridges out of the reach of children. If a child accidentally swallows toner, spit it out, rinse mouth with water, drink water and consult a physician immediately.

! When replacing drum cartridges and toner cartridges, be careful not to spill the toner. In case of any toner spills, avoid contact with clothes, skin, eyes and mouth as well as inhalation.

- ! If toner spills onto your skin or clothing, wash it off with soap and water.
- ! If you get toner particles in the eyes, wash it out with plenty of water for at least 15 minutes until irritation is gone. Consult a physician if necessary.
- If you inhale toner particles, move to a fresh air location and rinse your mouth with water.
- If you swallow toner, spit it out, rinse your mouth with water, drink plenty of water and consult a physician immediately.

■ Regulation



- U.S.A
WARNING: Shielded cables must be used with this equipment to maintain compliance with FCC regulations in the United States.
- EU/UK
Shielded cables must be used with this equipment to maintain compliance with Council Directive 2014/30/EU.

Radio Frequency Emissions (Class B digital device) (USA)

Note: This equipment has been tested and found to comply with the limits for a Class B digital device, pursuant to Part 15 of the FCC Rules. These limits are designed to provide reasonable protection against harmful interference in a residential installation. This equipment generates, uses and can radiate radio frequency energy and, if not installed and used in accordance with the instructions, may cause harmful interference to radio communications. However, there is no guarantee that interference will not occur in a particular installation. If this equipment does cause harmful interference to radio or television reception, which can be determined by turning the equipment off and on, the user is encouraged to try to correct the interference by one or more of the following measures:

- Reorient or relocate the receiving antenna.
- Increase the separation between the equipment and receiver.
- Connect the equipment into an outlet on a circuit different from that to which the receiver is connected.
- Consult the dealer or an experienced radio/TV technician for help.

Changes or modifications to this equipment not specifically approved by our company may void the user's authority to operate this equipment.

- This device complies with Part 15 of the FCC Rules. Operation is subject to the following two conditions: (1) This device may not cause harmful interference, and (2) this device must accept any interference received, including interference that may cause undesired operation.

Contact: FUJIFILM BI International Operations Corp.

Phone: +1-630-672-2341

Address: 850 Central Ave., Hanover Park, IL 60133, U.S.A.

- Regulatory Information for RFID
This product contains Radio Frequency Identification system device (RFID) and it is certified in compliance with applicable local laws and/or regulations.
- For the European Union
Hereby, we declare this product is in compliance with Directive 2014/53/EU. The full text of the EU declaration of conformity is available at the following internet address:
<https://support-fb.fujifilm.com/setupWorldwide.do>
- For UK
Hereby, we declare this product is in compliance with Product Security and Telecommunications Infrastructure Act 2022. The full text of the statement of compliance is available at the following internet address: <https://support-fb.fujifilm.com/setupWorldwide.do>

■ Environment

Disposal of Electrical and Electronic Equipment in Professional/Business Equipment (European Union)



In the European Union: This symbol on the product, or in the manual and in the warranty, and/or on its packaging indicates that this product shall not be treated as household waste. Instead it should be disposed in compliance with agreed national procedures.

By ensuring this product is disposed of correctly, you will help prevent potential negative consequences to the environment and human health, which could otherwise be caused by inappropriate waste handling of this product. Please contact your local representative prior to disposal.



This symbol on the batteries or accumulators indicates that those batteries shall not be treated as household waste.

If your equipment contains easy removal batteries or accumulators, please dispose these separately according to your local requirements.

The recycling of materials will help to conserve natural resources. For more detailed information about recycling this product, please contact your local authorities and ask for the correct way of disposal.

USA only

Perchlorate Material – special handling may apply.

See www.dtsc.ca.gov/hazardouswaste/perchlorate.

Any cartridge or container manufactured by or recommended by FUJIFILM Business Innovation Corp. for EPEAT registered products is not designed to prevent its reuse and recycling to support environmental sustainability.

Please refer to the official website for the status of security certification.
If you use the product as an ISO/IEC 15408 certified product, please refer to the "Security Function Supplementary Guide" of this model from the official website and make sure to configure the settings appropriately.